



Stunning Views & Off-

2+1 Beds & 2 Baths & 1 Parking with EV Charger & 1 Locker

Unit & South Beach Condos

2116-88 Park Lawn Rd

Live in the best corner unit South Beach Condos has to offer!



Humber Bay Shores

& 2+1 Beds

& 2 Baths

& 1 Parking Space with EV
Charger

& \$847.71 Condo Fee

& Taxes: \$3,213/2025

& 971 sq ft with 237 sq ft balcony

& Split floor plan layout



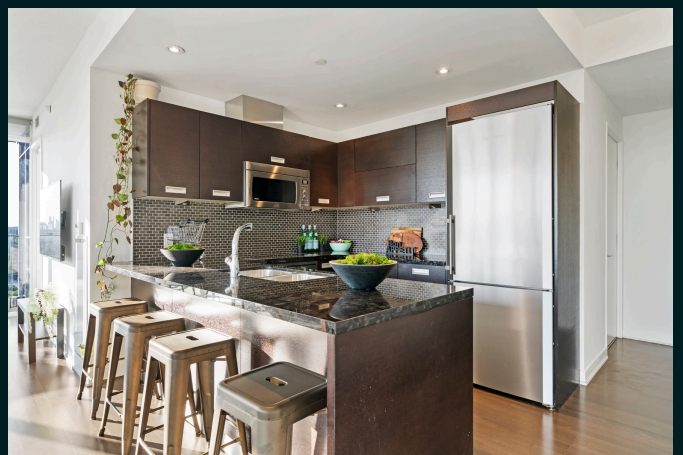
Scan the QR code
to explore the full photo
gallery, floor plans,
and virtual tour to
fully appreciate this
exceptional condo

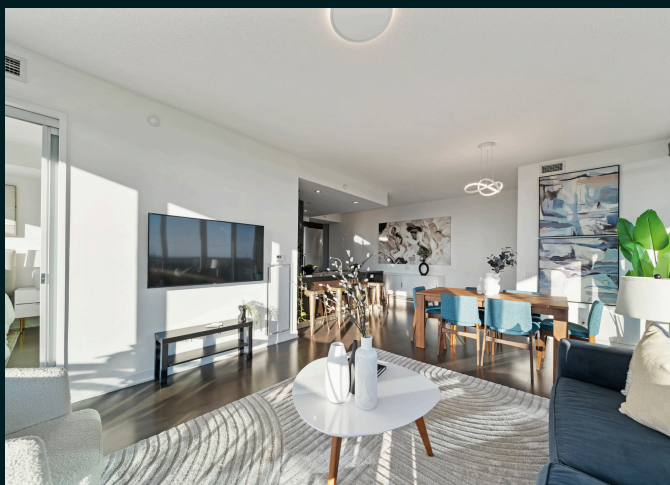
2116-88 PARK LAWN ROAD

Unmatched style, space, and sunset views!

This bright and spacious 2+1 bedroom, 2 bathroom condo features floor to ceiling wraparound windows, tree top and lake views, and incredible natural light throughout. The open concept living and dining area is perfect for entertaining, complete with automatic remote control blinds and a walkout to a stunning corner balcony with beautiful wood plank decking — the ideal place to enjoy water and sunset views. The sleek kitchen features granite countertops, stainless steel appliances, ample cabinetry, and a wall mounted breakfast bar for casual dining.

The primary bedroom includes a spa inspired ensuite, a walk in closet, tons of privacy, and floor to ceiling windows with stunning views. The second bedroom is surrounded by glass and offers peaceful treetop and lake views along with excellent closet space. The den is fully enclosed with sliding doors and custom built in cabinetry, making it the perfect private workspace. Includes one parking space equipped with an EV charger and one storage locker.







Best Amenities!

Amenities are truly unmatched: two state of the art gyms, indoor and outdoor pools, hot tub, sauna, steam room, basketball and squash courts, on demand spa services, guest suites, visitor parking, and 24 hour concierge

South Beach Condos

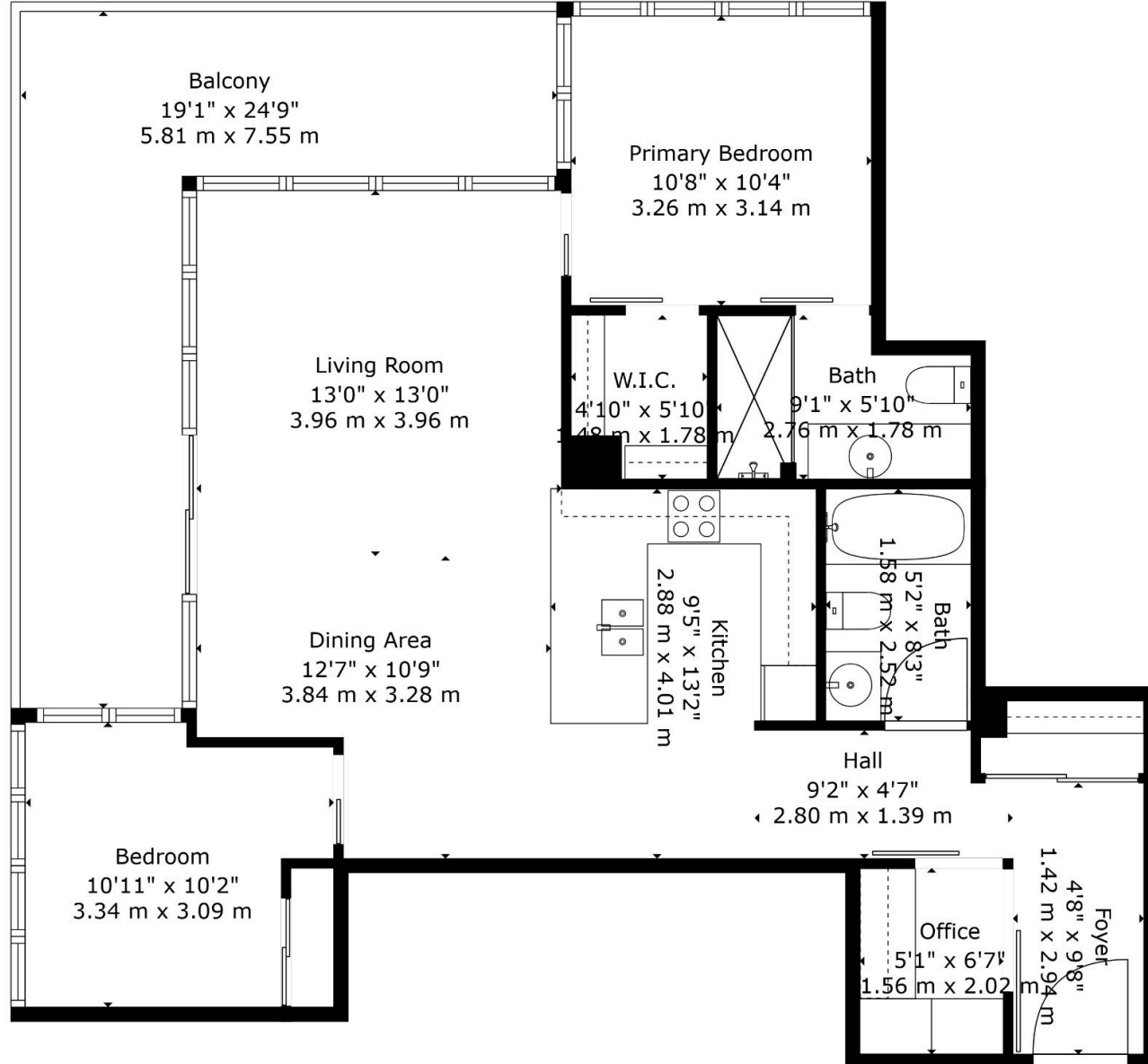
South Beach Condos is one of Humber Bay's most iconic and sought after buildings, known for its striking architecture, vibrant energy, and award winning design. From the moment you step into the lush, hotel inspired lobby, you'll feel the resort style atmosphere with curated lighting, lo fi beats, and high end finishes throughout.

Location, Location, Location!

Humber Bay Shores is one of the best neighbourhoods in Etobicoke, with vibrant restaurants, scenic waterfront trails, seasonal farmers' markets, and the future Park Lawn GO station on its way.







971 sq.ft

Excluded Areas

Balcony: 221 sq. ft, 21 m²

Walls: 84 sq. ft, 8 m²

MELISSA EMOND

SouthEtobicoke.com

MELISSA EMOND

Real Estate Agent

647.239.7587

melissa@southetobicoke.com

Re/Max West Realty Inc. Brokerage
1678 Bloor St. W, 4th Floor
Toronto, ON M6P 1A9

RE/MAX®
west realty inc.
B R O K E R A G E

Details provided for information purposes only and to be verified by buyer's representative.

This is not intended to solicit buyers or sellers currently under contract with a brokerage.

